



Macintosh Users Guide

Copyright

Copyright © 1993 by Inspace Systems Corporation. All Rights Reserved. Printed in USA.

Kudo is a registered trademark and Riffle, Image Browser, PICtpocket, Inspace Systems and the Inspace logo are trademarks of Inspace Systems Corporation.

QuickTime and AppleScript are trademarks of Apple Computer, Inc., used under license.

All other products are trademarks or registered trademarks of their respective manufacturers.

KUDO READER END USER
LICENSE AGREEMENT
NO FEE READ-ONLY VERSION

BY CLICKING ON THE "Continue" BUTTON, YOU ARE CONSENTING TO BE BOUND BY AND ARE BECOMING A PARTY TO THIS AGREEMENT. IF YOU DO NOT AGREE TO ALL OF THE TERMS OF THIS AGREEMENT, CLICK THE "Cancel" BUTTON AND THE INSTALLER WILL QUIT.

GRANT. Inspace Systems Corporation ("Inspace") hereby grants you a non-exclusive license to use its accompanying software product ("Software") free of charge if (a) you do not try to sell, modify, or otherwise alter the software in any way; or (b) all documentation is included with the distribution of this software product.

If you fit within the above description, you may: use the Software on any computer; you may copy the Software for archival purposes, provided any copy contain all of the original Software's proprietary notices.

You may not: permit other individuals to use the Software except under the terms listed above; modify, translate, reverse engineer, decompile, disassemble (except to the extent applicable law specifically prohibit such restriction), or create derivative works based on the Software; copy the Software (except for back-up purposes); rent, lease, transfer or otherwise transfer rights to the Software; or remove any proprietary notices or labels on the Software.

TITLE. Title, ownership rights, and intellectual property rights in and to the Software shall remain with Inspace. The Software is protected by the copyright laws of the United States and international copyright treaties. Title, owner-

ship rights, and intellectual property rights in and to the content accessed through the Software is the property of the applicable content owner and may be protected by applicable copyright or other law. This License gives you no rights to such content.

DISCLAIMER OF WARRANTY. The Software is provided on an "AS IS" basis, without warranty of any kind, including without limitation the warranties of merchantability, fitness for a particular purpose and non-infringement. The entire risk as to the quality and performance of the Software is borne by you. Should the Software prove defective, you and not Inspace assume the entire cost of any service and repair. In addition, the security mechanism implemented by the Software has inherent limitations, and you must determine that the Software sufficiently meets your requirements. This disclaimer of warranty constitutes an essential part of the agreement. SOME STATES DO NOT ALLOW EXCLUSIONS OF AN IMPLIED WARRANTY, SO THIS DISCLAIMER MAY NOT APPLY TO YOU AND YOU MAY HAVE OTHER LEGAL RIGHTS THAT VARY FROM STATE TO STATE OR BY JURISDICTION.

LIMITATION OF LIABILITY. UNDER NO CIRCUMSTANCES AND UNDER NO LEGAL THEORY, TORT, CONTRACT, OR OTHERWISE, SHALL INSPACE BE LIABLE TO YOU OR ANY OTHER PERSON FOR ANY INDIRECT, SPECIAL, INCIDENTAL, OR CONSEQUENTIAL DAMAGES OF ANY CHARACTER INCLUDING, WITHOUT LIMITATION, DAMAGES FOR LOSS OF GOODWILL, WORK STOPPAGE, COMPUTER FAILURE OR MALFUNCTION, OR ANY AND ALL OTHER COMMERCIAL DAMAGES OR LOSSES.

THIS LIMITATION OF LIABILITY SHALL NOT APPLY TO LIABILITY FOR DEATH OR PERSONAL INJURY TO THE EXTENT APPLICABLE LAW PROHIBITS SUCH LIMITATION. FURTHERMORE, SOME STATES DO NOT ALLOW THE EXCLUSION OR LIMITATION OF INCIDENTAL OR CONSEQUENTIAL DAMAGES, SO THIS LIMITATION AND EXCLUSION MAY NOT APPLY TO YOU.

TERMINATION. This license will terminate automatically if you fail to comply with the limitations described above. On termination, you must destroy all copies of the Software.

EXPORT CONTROLS. None of the Software or underlying information or technology may be downloaded or otherwise exported or reexported (i) into (or to a national or resident of) Cuba, Iraq, Libya, Yugoslavia, North Korea, Iran, Syria or any other country to which the U.S. has embargoed goods; or (ii) to anyone on the U.S. Treasury Department's list of Specially Designated Nationals or the U.S. Commerce Department's Table of Deny Orders. By downloading or using the Software, you are agreeing to the foregoing and you are representing and warranting that you are not located in, under the control of, or a national or resident of any such country or on any such list.

MISCELLANEOUS. This Agreement represents the complete agreement concerning this license between the parties and supersedes all prior agreements and representations between them. It may be amended only by a writing executed by both parties. If any provision of this Agreement is held to be unenforceable for any reason, such provision shall be reformed only to the extent necessary to make it enforceable. This Agreement shall be governed by and construed under California law as such law applies to agreements between California residents entered into and to be performed within California, except as governed by Federal law. The application the United Nations Convention of Contracts for the International Sale of Goods is expressly excluded.

Contractor/manufacturer is Impace Systems Corporation, 2665 Ariane Drive Suite 207, San Diego, CA 92117.

Table of Contents

Welcome to Kudo.....	1
Why Use Kudo.....	1
Quick Start.....	3
Using Kudo.....	7
Installing Kudo.....	7
Opening a Catalog.....	9
The Catalog Window.....	10
Finding Images.....	14
The Exclusive Riffle™ Feature.....	19
Display Original.....	21
Reveal Original.....	22
Edit Original.....	22
Placing Image Files.....	23
Sorting.....	27
Rotating Thumbnails.....	28
Printing Your Catalog.....	28
Exporting Catalog Information.....	29
Other Menu Options.....	29
Automating Kudo with AppleScript™.....	30
The Scripts Menu.....	31
Creating and Editing a Script.....	31
Running a Script.....	33
Kudo Scripts.....	33
For More Information on AppleScript.....	34
Additional Features.....	39
Making Your Catalogs Available to Others.....	42
Sharing Catalogs on a Network.....	42
Troubleshooting.....	45
AppleScript Appendix.....	48
Index.....	49

Welcome to Kudo

Welcome to Kudo, an exciting way to view digital images. Just as you consult any catalog for certain products, consult your Kudo catalog for images, sounds, and movies.

Kudo catalogs are collections of image thumbnails. Think of a thumbnail as a miniature photo of an image file. It looks like the image file, but it is a 120 X 120 pixel replica that is stored in a Kudo catalog. With these catalogs of thumbnails, you can easily view, sort, find, and place original artwork.

The CDROM that this manual came with more than likely has many images on it. The publisher's of the CDROM wanted to give it's users the most efficient way of viewing and using the image files contained on the CDROM. That is where Kudo catalogs come in.

Kudo is a user interface that allows you to view thumbnails, get information about the images, and place the original images directly into your documents.

Features

You have hundreds of clip art, logos and other graphic image files on your CDROM, possibly created using different applications. CDROMs with Kudo catalogs have the following features:

- View all images on entire CDROM.
- Reference the file's location, size and format.
- Display original full-sized images in a floating window.
- Place the file into another document by just dragging the thumbnail image into the Aldus PageMaker or QuarkXPress document and letting go.
- Open your images in the application that created them.
- A single Kudo catalog can contain up to 134,000 thumbnails.

Kudo saves you hours of time normally spent searching for graphics.

Quick Start

Kudo™ is easy to install and easy to use. This section will enable you to install Kudo and become familiar with its most important features in a few short minutes. Once you become familiar with the basics of Kudo™, you should then read the remainder of the User's Guide and then refer to it as a handy reference when questions arise.

1. Install Kudo by double-clicking on the Installer icon on your CDROM.
2. The installer will place Kudo and support files onto the drive that you have selected. The supports files are translators and place modules that Kudo uses.
3. Double-click on Kudor or a Kudo catalog to launch the program. If you opened just the application you will be prompted to open a Kudo catalog.
4. Once a catalog is open, click on a thumbnail to select it. Pull down the Image menu and select Preview to see the image in a full-sized window. Click the standard Macintosh close box to close the preview window.
5. With the thumbnail still selected, pull down the Image menu and select Reveal Original. The Finder will then locate and reveal the folder or disk containing the selected image file. Click on the Kudo window to return to Kudo.
6. Next, click on the List View button. The list view presents thumbnails along with file information in a column. The Gallery View button will return you to the gallery view; the grid style layout that shows more thumbnails but less information.

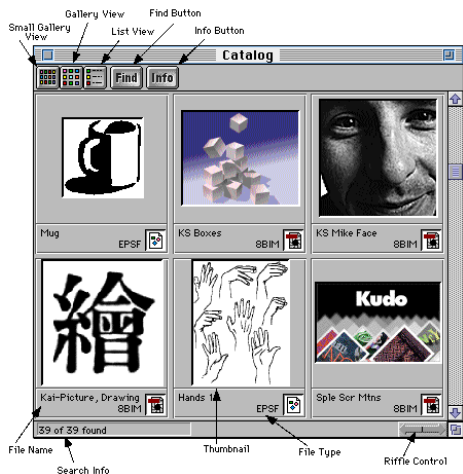


Figure 1. The Catalog Window.

7. Click the Find button to open the selection criteria dialog box. This will allow you to locate thumbnails within the catalog that have specific characteristics. Click on the first pull down menu and select "Name" to tell Kudo to search on the name characteristic. With "contains" selected in the second pull down menu, type in part of a file name in the box to the right (Figure 2 below). Click the Find button to search the catalog for all thumbnails that meet the specified characteristic. Kudo will then display only those thumbnails. Click the Find button again and select "Everything" in the first pull down menu to find and display all thumbnails in the catalog.

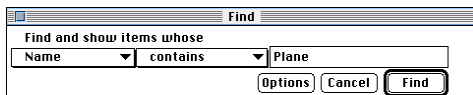


Figure 2. The Find Dialog.

8. Position the mouse cursor over the Riffle™ control (the double-headed arrow with tick marks) in the lower right-hand corner of the catalog window. Click and hold the mouse button down over the Riffle control to zip through the contents of the catalog. Using the Riffle control is like pressing Play and Fast Forward or Reverse on a VCR to quickly move forward or backward while watching the frames flash by. Experiment with this feature and refer to the section on the Riffle Option later in this guide for further details.

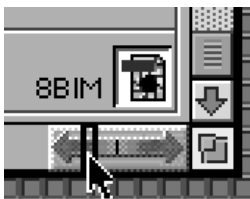


Figure 3. Using The Riffle Control.

9. Finally, if you are using System 7 and Aldus PageMaker or QuarkXPress, open a document in that application and position its window so that it will be visible behind the Kudo catalog window. Return to Kudo, select a thumbnail and drag it into the document window. Kudo finds the original image file and places it in that document in the upper left corner (defined by the document margins). See Figure 4.

Note: If you use Freehand, Illustrator, Premiere, Fractal Painter, or Photoshop, dragging a thumbnail onto a document window opens the original image file in a new window. This is much faster than opening via a dialog box.

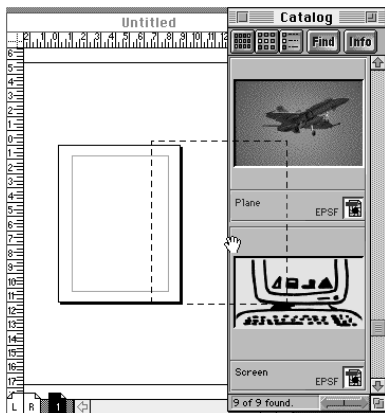


Figure 4. Drag the thumbnail to the document.

These are some of the many features of Kudo. Try the different menu commands and discover additional features. The following sections of this User's Guide provide more detail about all features and about managing Kudo catalogs.

Using Kudo

To start using Kudo, install the application and create a catalog.

Installing Kudo

To use Kudo, we recommend using a Macintosh with 4MB RAM that runs either System 6 or System 7.

Installing Kudo is a no-hassle process.

- Double-click the Installer icon on the Kudo disk and follow the instructions. The files will be installed automatically.

Note: If you are installing Kudo onto a Macintosh with an existing copy of Kudo, simply have the installer replace the existing Kudo Folder. All the new files will be updated automatically.

- The Installer will place Kudo into a folder for you.

Note: To take advantage of AppleScript, install the AppleScript environment from the Kudo diskette labeled AppleScript Installer.

Opening a Catalog

To open an image catalog, simply double-click it. Kudo will open the catalog and display the window.

You can open several catalogs at once. Once you have opened a catalog you can simply choose "Open" in the File menu or double-click another catalog's icon. When you choose the next catalog, Kudo will open a second window.

The Catalog Window

The catalog window features make image access even easier.

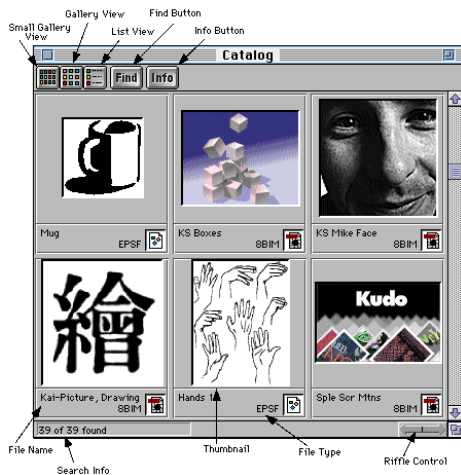


Figure 5. The Catalog Window.

Kudo displays several thumbnail images in the window. Below each thumbnail, Kudo lists the original file name and displays a graphic that identifies the file type. At a glance, Kudo shows you what the image looks like and whether the file type matches your need.

View buttons

The Gallery View, Small Gallery View and List View buttons allow you to switch between views. Switch between the views by clicking the view button you prefer.

- The gallery view (Figure 6 below) uses a grid style layout showing several thumbnails and their file type at once. Click the Info button to view detail about the selected thumbnail.

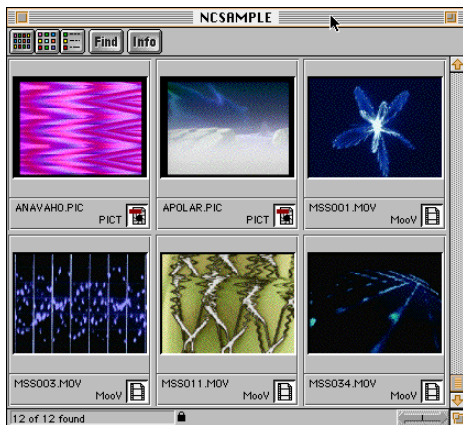


Figure 6. The Gallery View.

- The small gallery view (Figure 7 below) allows more thumbnails to be viewed within the catalog window by reducing the thumbnails to 1/4 their normal size. The file name is not displayed in this view. The functionality available within the small gallery view is the same as that in the gallery view.

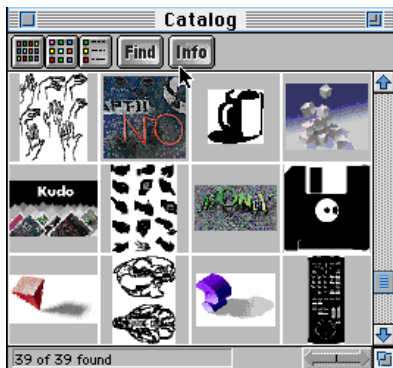


Figure 7. The Small Gallery View.

- The list view (Figure 10 below) uses a vertical layout with fewer thumbnails in the window, but with more information about each file. The list view shows the thumbnails in a vertical column and the file information in a second vertical column. An icon representing the file type is also displayed in the second column.

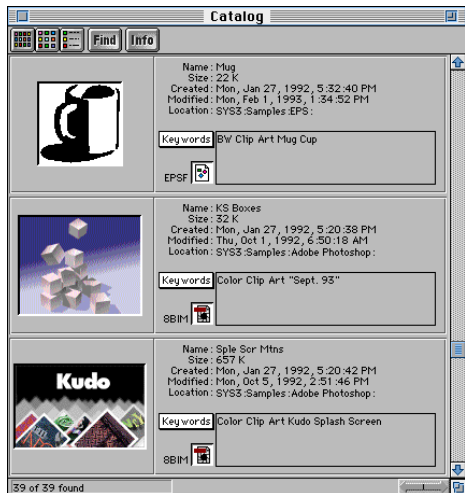


Figure 8. The List View.

- You also can change the view using the View menu.

Find button

Use the Find button to search the catalog for thumbnails with specific characteristics. Kudo searches the catalog and displays the thumbnails that were identified in the search. All other thumbnails are hidden from view.

For example, if you search the catalog's notes for a client name, Kudo only displays the thumbnails with that information. Kudo will not delete or edit the remaining thumbnails; it just hides them from view. To return to the full catalog, use Find to search the catalog for "Everything" or choose "Find All" from the Image menu.

When you select the Find feature, Kudo displays a dialog.

- Use the pull down menu to tell Kudo the thumbnail characteristic it should search. You can search by name, size, kind, creator, date created, date modified, notes or location.

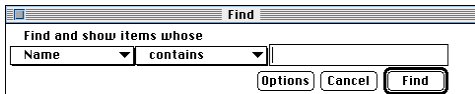


Figure 9. The Find Dialog.

- Use the next pull down menu to tell Kudo how to search the catalog. This pop-up window will become available after you make a selection in the first pop-up window.

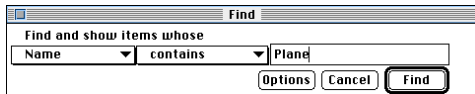


Figure 10. The Find Dialog with search criteria.

- Use the "Edit Text" box to tell Kudo what words or information to search for.
- You can also choose the Find option using the Image menu.



Figure 11. The Find Dialog with keywords list.

The keyword editor is available to select keywords when using the Find command to search the notes attached to thumbnails. To search by keywords:

- Select "Keywords" from the first pull down menu in the Find dialog.
- Kudo will display the keywords editor pull down menu to the right of the "Edit Text" box.
- Select the keyword you wish to find and release the mouse button.
- Kudo will insert the keyword into the "Edit Text" box.

Clicking on the "Options" button will expand the Find dialog, showing more search criteria and several check box options. Use these search pop-ups to narrow your search when you need to find specific images.

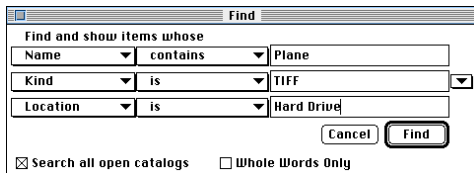


Figure 12. The Find Dialog with search options.

Searches may be expanded to all open catalogs or limited to thumbnails found in a previous search. For example, you might first search all open catalogs for all thumbnails which contain the keyword "Plane" in the notes. Once these are located, you might want to further refine the search by finding only those thumbnails with a certain file type such as PICT.

To expand or limit the search:

- Click on the "Options" button of the Find dialog box.
- Click on the left-hand check box to expand the search to all open catalogs.
- Click on the right-hand ("Whole Words") check box to limit the search to complete keywords. Using the example in Figure 14, "Plane" would be found, and "Planet" would not be.

Note: The three search criteria are associated with a logical "And." In the above example, all three search specifications would have to be true for the item to be found. Long searches can be cancelled from the Find dialog by typing "Command-."

Find All Command

The "Find All" command allows you to locate and display all thumbnails in a catalog. This command can be used to return to the full catalog after the display has been limited by a search for thumbnails with specific characteristics.

- Choose "Find All" from the Image menu.
- Kudo will display all thumbnail images in the open catalog.
- You can also use the Find command on the Image menu and choose "Everything" to return to the full catalog.

Info button

The Info button gives you quick access to a thumbnail's information. This option tells you the file name, size, date created, date modified, location of the original file, any keywords you have attached to the thumbnail, the name of the application that created the original file, file kind and the width/height measurements of the original. The width and height measurements can be viewed in pixels, picas, inches or centimeters.

- Select a thumbnail.
- Click the Info button.
- Kudo will display the information in a floating window.

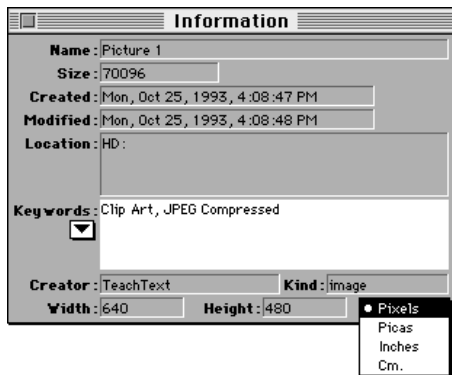


Figure 13. The Info Window.

- Use the pull down menu in the lower right-hand corner of the Info window to select the units for the width and height measurements in pixels, picas, inches or centimeters.
- Use the pull down menu under the Keywords label to automatically enter keywords directly into the keyword area. See page 39 for information on how to use the keyword editor.
- You can also choose Get Info using the "Image" pull down menu.

When the Info window is open, click other thumbnails to display their information. Close the window using the Close Window button.

Note: Any changes made to the units of measurement or location of the Info window are retained the next time the Info window is opened.

Riffle Buttons

The Riffle buttons are part of Kudo's exclusive Riffle feature. Turn to page 20 for more information on the Riffle feature.

Close Window Button

The Close Window button is a standard Macintosh feature that closes the window. With Kudo, this button closes the catalog.

Zoom Window Button

The Zoom Window button is another standard Macintosh feature. Clicking it zooms the window to its full-screen size. Click it again to return the window to its smaller size.

Scroll Bar

Use the Scroll bar to move through the catalog.

Note: Remember that Kudo will display the catalog based on the current Find criteria. If you have selected "Everything" in the Find feature, the entire catalog is available. However, if you have used Find to select a specific group of files, you can only scroll through those files. You must set new search criteria to scroll through your other thumbnails.

Grow Box

The Grow box is the standard Macintosh feature that allows you to re-size the window. Kudo re-sizes the window proportionally to the thumbnail size so your window always displays entire thumbnail entries.

The Exclusive Riffle™ Feature

The Riffle option is a special Kudo feature that lets you visually zoom through your catalog. If you can't remember the name of the file you need or you want to review the images you have, use the Riffle option to zip through the catalog to see what's there.

When you use the Riffle option, you fly through the catalog, glancing at

each thumbnail. You can control the Riffle speed to spend more, or less time, looking at each image. You can even change the Riffle direction if you miss an image. Once you recognize an image, simply release the mouse and the image is right in front of you.

Using the Riffle Feature

Kudo's main window displays the thumbnails in a gallery or list format. When using the Riffle option to zip through the catalog, it displays the images one at a time in the lower right corner of the main window.

To zoom through your catalog:

- Click and hold on the Riffle control (Figure 14 below).
- You will see one thumbnail after another in the lower right corner just above the Riffle control.

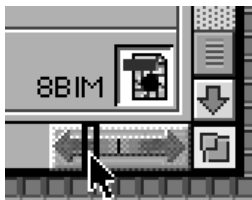


Figure 14. Using the Riffle control.

- Release the control when you see the thumbnail you want.
- When you release the Riffle control, Kudo will show the thumbnails that surround the one you chose.
- Kudo highlights the thumbnail that you chose. However, your reactions are slower than Kudo's Riffle option, so when you release the Riffle control, you will select a thumbnail that is a few frames away from the one you wanted. Kudo scrolls the catalog to the appropriate location and displays the surrounding thumbnails.

Kudo will zoom through the catalog until you release the control or until it reaches the end of the catalog. With the Riffle feature, you can zoom forward to the end of the catalog or you can zoom backward to the beginning. To view the entire catalog, start from the beginning.

Controlling the Riffle Speed and Direction

Control the Riffle speed and direction by dragging the mouse to the left or right while holding it on the Riffle shuttle control.

By holding down and dragging the mouse, you change speed and direction of your progress through the catalog.

- Drag the mouse to the right or left to control the speed and direction.
- Click the right end of the control to start moving through the catalog. Drag the mouse to the right to increase the speed. Drag the mouse to the middle and Kudo will stop riffling. When you drag further to the left, Kudo will start moving in the opposite direction and increase speed.
- You will find the center is the point of zero speed. At this point, Kudo stops moving and holds on one thumbnail.
- In Figure 14, the thumbnails would be shown in reverse order at a medium rate.

The Image Menu

Display Original

Kudo maintains a link between the thumbnail image in the catalog and the original file. While in Kudo use the Preview option to preview the original image file in a full-sized window.



Figure 15. The Display Original Screen.

- Select the thumbnail you wish to view
- Choose Display Original from the Image menu or double click on the thumbnail.
- Kudo will find the actual image file and display it in a full-sized window.
- If your system only uses 256 colors, you can choose "Use Better Colors" under the File menu.

To preview other image files, simply click their thumbnails while the Preview window is open. QuickTime movies are automatically played when a thumbnail associated with QuickTime is previewed.

Note: Kudo cannot preview files stored on off-line disks. If the file is on an off-line disk, Kudo will ask you to insert the correct disk.

Reveal Original

Similar to the Finder's Find feature, Reveal Original instructs the Finder to locate and reveal the image file in its folder or disk window. Once revealed, you can immediately open and use the file.

- Select the thumbnail.
- Choose Reveal Original from the Image menu.
- Kudo will open the files folder or disk window and highlight the file.
- Double-click to open the file in the original application.

Edit Original

Kudo maintains a link between the thumbnail image in the catalog and the original file. While in Kudo you can launch the application that created your original image file and open that file for editing.

- Select the thumbnail for the file you wish to open.
- In Gallery or List View, Double-click on the file type icon. In Small View choose the "Edit Original" from the Image menu.
- Kudo will launch the application that created the original file and open the file.

Placing Original Images

There are three methods for placing an image into a document:

- Drag and Place
- Using the Place command from the Image menu.
- Copy and Paste. If you copy a thumbnail, then paste it into a document, the original image will be pasted.

Use Kudo's special Place feature to place an original image file into another document. When you select Place, Kudo instructs the target application (for example, PageMaker) to place the file into the document.

Drag and Place

Kudo has developed a first-of-its-kind technology which allows you to Drag and Place images into PageMaker and QuarkXPress documents. Use Drag and Place to save time and save disk space. This single step operation takes less time than manually placing images into a document. Kudo inserts a file reference into the target document, eliminating the need to create an unnecessary copy of your image file.

With the Drag and Place feature, simply drag the thumbnail from your catalog to an open document. Kudo will find the original image file and place it in the document. See Figure 4.

- Select the thumbnail.
- Hold down the mouse and drag it to the open document.
- Kudo finds the original image and places in the upper left corner, defined by the document margins.

Note: Kudo will additionally place the image into a pre-selected graphic frame when using QuarkXPress.

Note: System 7 is required for Drag and Place. The Place Module for the application you are using must be installed in the Kudo folder and the format of the file being placed must be supported by that application. Placing an image that PageMaker or QuarkXPress does not recognize can cause unexpected results. For example, placing a GIF file into PageMaker will result in text (not an image as you would expect) being imported into PageMaker. This may be overcome in the future.

- Kudo will find the original image file and place it into the document.

Note for QuarkXPress Users: "Drag and Place" works with all QuarkXPress 3.1x versions. This means you can drag thumbnail images from Kudo and place them directly into QuarkXPress. If you are using version 3.11, Kudo will install our XTension, "Kudo XT", into your QuarkXPress folder. Version 3.2 requires no special XTension and will work automatically.

Note for Aldus PageMaker Users: "Drag and Place" works with PageMaker version 4.2 and up. This means you can drag thumbnail images from Kudo and place them directly into PageMaker.

Another Way to Use Place

You can also place an image into a supported application using the Place menu. PageMaker, QuarkXPress and other major applications accept images using Place from Kudo.

Note: If you did not receive a Place Module for your application, contact Imspace Customer Service about additional Place Modules.

To place an image file:

- Select the thumbnail image.
- Select Place under the Image menu and identify your target application. Kudo lists every active application that supports the Place technology.

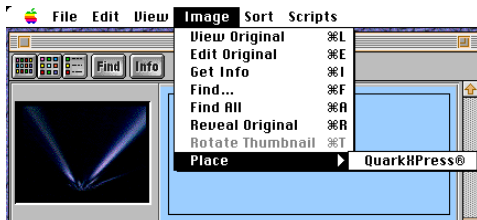


Figure 19. The Place menu.

- Kudo instructs the target application to find the original image and place it in the upper left corner (defined by the document margins).

Note: If available, QuarkXPress will place the image into a selected graphic frame.

Note: The application you are placing the image file into must already be open before it will show up under the Place menu.

Using Copy and Paste

If your target application does not support Kudo's Place option, export the image file using Copy and Paste.

- Select the thumbnail image.
- Choose "Copy" under the Edit menu.
- Kudo will find the original image file and copy it to the clipboard.
- Open the target document.
- Choose "Paste" under the Edit menu of the target document.
- Your target application will paste the image onto the document page.

Note: When you use copy, the entire original image file is copied to the clipboard. Be sure you have enough RAM to support this action.

Sorting

When you open a catalog, Kudo lists the thumbnails according to when they were added to the catalog. Use the Sort menu to list the thumbnails by size, date or even location. For example, sort by "Modification Date" to see which image files have been recently updated or sort by "Kind" to group images by file type.

You can sort the catalog using the same criteria found in the Find feature.

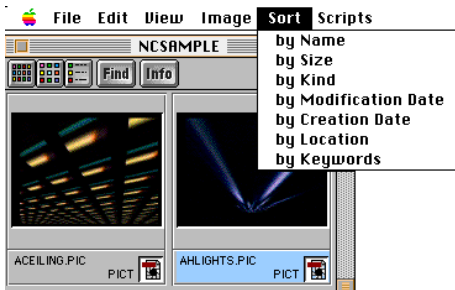


Figure 20 The Sort Menu.

Sort and Find use the same criteria but they affect the catalog differently. With Find you use the criteria to determine which thumbnails Kudo should display and which it should hide from view. With Sort, you re-arrange the thumbnails that are displayed.

When you close and re-open the catalog, Kudo shows all the thumbnails in their original order.

To sort your catalog:

- Select sorting criteria.
- Kudo will automatically re-arrange the thumbnails and display them in their new order.

Printing Your Catalog

Use the standard Page Setup and Print commands to print part or all of your catalog. The Print feature always prints the current selection of thumbnails. For example, to print all thumbnails in a catalog, use the Find command to find "everything" (the default), and then select print from the File menu. Kudo prints in "thumbnail increments" on a page (i.e. 9-up on 8 1/2" X 11" paper in Gallery View).

Exporting Catalog Information

The Export command allows you to create a tab-delimited text file suitable for importing into database applications. This text file includes pertinent catalog information including file name, size, creation date, modification date, location and file type. You can import the text file into various database applications for quick and accurate image database tracking. To use the Export feature, choose "Export" from the File menu.

Note for QuarkXPress Users: You can use Kudo's Export feature to automate repetitive image layouts without using AppleScript. A Quark XTension called "XData" (available from XChange at 303-229-0656) can read Kudo export files and use the information provided to help you create large documents.

Note for Aldus PageMaker Users: You can use Kudo's Export feature to automate repetitive image layouts. An Aldus Addition called "Datashaper" available from ElseWare at 206-547-9623) can read Kudo export files and use the information provided to help you create large documents.

Other Menu Options

Kudo uses several other menu options that are standard Macintosh commands. Use these commands as you would use them in other applications. They include: New, Open, Close, Quit and Show Clipboard.

The Scripts Menu

The Scripts menu is linked to a "Scripts" folder located in the same folder as the Kudo application. Any AppleScript placed in this folder will appear in the Scripts menu alphabetically. The first 9 items will have a command key associated with them. You can have up to 30 scripts in the folder.

Automating Kudo with AppleScript™

Kudo is a "scriptable" application. This means that it can be controlled by AppleScript allowing you to automate repetitive procedures. For example, at the beginning of a work session, you might want to open a set of Kudo catalogs and then have those catalogs automatically updated with new images from your hard drive. With AppleScript this can be done quickly and easily with a few clicks of the mouse.

Kudo is a "recordable," "scriptable" and "attachable" application. This means that you can use the AppleScript recorder to create a script and then run the script from within Kudo. Automating procedures in Kudo becomes as easy as turning on the AppleScript recorder and performing the procedure once. More instructions on Applescript can be found in For More Information on page 34.

AppleScript must be installed before you can use the Kudo scripts or create your own scripts. AppleScript is installed separately from Kudo and is on the AppleScript Installer Disk in your Kudo set of diskettes. Just install it as you installed your original Kudo.

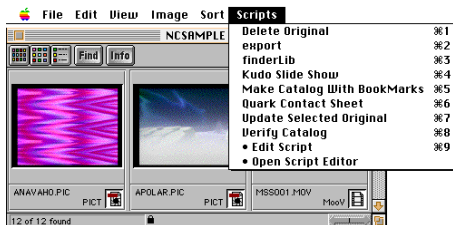


Figure 23: The Scripts Menu.

Note: The Scripts Menu will remain gray until you install the AppleScript software from Apple Computer, Inc. It must be installed on the system from the AppleScript Installer of the Kudo Installation diskettes. AppleScript requires system software version 7.0 or later.

Creating and Editing a Script

Kudo uses the Apple Script Editor to create new scripts by recording actions and commands while you are in Kudo. You can activate these scripts later to automate your work. Creating a new script is easy.

- Open a Kudo catalog. This will be the catalog you will be working with.
- Select "Open Script Editor" in the Scripts menu.
- Kudo will launch the Apple Script Editor application and display a new "Untitled" script window.

Note: The first time you run this command, AppleScript will ask you to find the Script Editor. After you run the installer, it will be located in a folder called "Apple Scripting System."



Figure 24. The Script Editor New Script Window.

- Click the "Record" button to start the scripting process.

- Click on the Kudo catalog to bring Kudo to the foreground.
- Select "Add/Update" from the File menu and select a file, folder or volume that you want Kudo to automatically scan.



Figure 25. The Script Editor Window.

- The Script Editor records the "Add/Update" command in the AppleScript language. You can experiment with different commands to see how Kudo can be scripted.
- Click on the Script editor and bring it to the foreground. Click on the "Stop" button to finish the recording session.
- Select the Script Editor window and choose "Save As" from the File menu. You are presented with a Save dialog to name the script that you are creating.



Figure 26. The Script Editor Save-As Dialog.

- Save the script into the "Scripts" folder that is in the "Kudo® Catalog Reader" folder. This will make your script appear in the

- Kudo Scripts menu. Save this example as "Update Kudo Catalog."
- Close the Script Editor by choosing the Close Window Button.

Running a Script

Running the scripts that you create with the Script Editor or running the included Kudo Scripts is as simple as pulling down a menu. To run the sample script that you just created:

- Choose the "Update Kudo Catalog" from the Scripts menu.

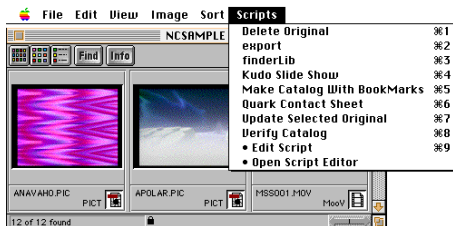


Figure 27. The Scripts Menu.

- Kudo will automatically execute the "Add/Update" command on the file, folder or volume you selected.

Kudo Scripts

Kudo includes a number of scripts that automate common tasks. These scripts can also be modified to increase their capability. Feel free to experiment with them. Open them with the script editor to see how they work, and make your own custom solutions!

For More Information on AppleScript

- See the AppleScript Appendix on page 48.
- The AppleScript Installer disk that is included with Kudo contains sample scripts and a HyperCard reference stack.
- AppleScript Extras can be found in the Kudo folder installed on your hard drive. It contains advanced scripts which can be installed

into your Scripts Folder. It contains associated read-me files which can be printed for more instructions.

- Apple Computers offers you a host of companion products available through APDA (Apple Programmer & Developer Association.) APDA can be reached in the United States at (800) 282-2732; in Canada at (800) 637-0029; or internationally at (716) 871-6555.

Apple events/AppleScript Programming Tutorial
R0224LL/A \$150 (U.S.)

AppleScript Developer's Toolkit
RO175LL/A \$199 (U.S.)

Making Catalogs Available to Others

Sharing Catalogs on a Network

Kudo catalogs can be accessed concurrently by multiple users if the catalog is Read-Only. Users may view, search and perform Drag and Place operations but changes cannot be made to the content of the catalog. Locking of the catalog file as Read-Only is done from within the operating system.

Troubleshooting

The Place command on the Image menu never has anything under it even though it appears to be a submenu selection.

Application names only appear as submenu selections under the Place command on the Image menu if that application is currently open and a Place Module for that application is located in the Kudo folder. If nothing appears under this command, return to the Finder, insure that the Place Module is installed in the Kudo application folder and open the application. If your application still is not listed in the Place menu, contact Impace Systems Customer Service for additional Place Modules.

Nothing happens when you drag a thumbnail into a PageMaker or QuarkXPress document.

Applications such as PageMaker and QuarkXPress only support the importing of specific file formats. If a file format is not supported by the application you are using, nothing will happen when you drag the Kudo thumbnail into the application document. Consult the documentation provided with the application to determine which file formats are supported or copy and paste the thumbnail from Kudo.

"Script" pull down menu is gray.

The AppleScript extension must be loaded into your System Folder. Use Kudo disk 3 and install AppleScript with the included installer. Note: AppleScript only runs on System 7.

AppleScript Appendix

Kudo Suite of Commands

Delete: Mark a thumbnail for deletion.

- A. Delete (Selected Thumbnail) of Catalog 1
- B. Delete Thumbnail 23

Kudo marks the thumbnail for deletion, and actually deletes it when you close the catalog.

Do Script: Run a script from Kudo's Scripts menu.

- Do Script "Update FileMakerPro"

This command can be used by applications that do not have robust AppleScript support. Have the application send Kudo the Do Script Apple Event and Kudo will run the Script. Kudo will only run scripts that are located in the Kudo "Scripts" folder.

Preview: Display preview window for a thumbnail.

- A. Preview Thumbnail 4 of Catalog 1
- B. Preview (Selected Thumbnail) of Catalog 1

Use this command to make Kudo display the preview of a Thumbnail.

Show: Find specified thumbnails.

- A. Show every Thumbnail of Document 1
- B. Show (every Thumbnail whose Kind is "TIFF")
- C. Show (every Thumbnail whose Comments contain "Plane")

This is the same as the Kudo "Find" dialog. Example A demonstrates the equivalent of "Find All," and examples B & C show how to find thumbnails with specific characteristics.

Sort: Sort thumbnails in a window.

- A. Sort Catalog 1 by NameSort
- B. Sort Catalog 1 by KindSort

This command tells Kudo to sort the catalog.

Undelete: Undelete a previously deleted thumbnail.

- Undelete Thumbnail 1 of Catalog 1

Update: Add/Update image files to a Kudo catalog.

- Update Catalog 1 with alias "Hard Drive:Clip Art"

This command will tell Kudo to update its catalog with the specified file,

folder or volume.

Index

- A
 - AppleScript 30, 48
 - Additional Help 34
 - Creating Scripts 31, 48
 - Kudo Scripts 33
 - Running Scripts 33
 - The Scripts Menu 31
 - AutoDoubler 43
 - Automatic Save 41
- B
 - Better Colors 21
- C
 - Catalog Entries, Updating 35
 - Catalog 7
 - Creating 7
 - Opening 9
 - Catalog Window 10
 - Saving 41
 - Close Window Button 18
 - Compressed Files 44
 - Copy and Paste 27
- D
 - Drag and Place 23
 - Disk Doubler 44
- E
 - Edit Original File 22
 - Editing Thumbnail Notes 40
 - Export Command 29
- F
 - Find All Command 16
 - Find Button 14
 - Find Dialog Box 14, 15

- Find Thumbnail 14
- Finding Original File Location 22

- G
 - Get Info 16
 - Gallery View 10,11
 - Grow Box 18

- I
 - Info Button 16
 - Installation 7

- K
 - Keywords 39
 - Creating Keywords 39
 - Searching for Keywords 14
 - Using Keywords in Notes 39

- L
 - List View 13

- M
 - Make Self-Contained Command 42
 - Moving Thumbnails between Catalogs 38

- N
 - Networks and Kudo Image Browser 42

- O
 - Opening a Catalog 9

- P
 - PageMaker 1, 2, 6, 23, 25, 26, 46
 - Place Menu 26
 - Place Modules 23, 26, 45
 - Placing Image Files 23
 - Preview 21
 - Printing Catalog 29

- Q
 - QuarkXPress 1, 2, 6, 23, 25, 26, 29, 46
 - Quick Start 3

R

- Reveal Original 22
- Rifle Buttons 18
- Rifle Option 19
 - Controlling Direction and Speed 20
 - Using Rifle Option 19

S

- Script Editor 31
- Scripts Menu 31
- Saving Catalog 41
- Scroll Bars 18
- Sharing Kudo Catalogs 42
- Small Gallery View 12
- Sorting Thumbnails 27
- Stuffit 44

T

- Thumbnail Notes, Editing 40
- Troubleshooting 45

U

- Updating Catalog Entries 35
 - Adding a Single File 36
 - Affects of Catalog Updates 37
 - Deleting Catalog Entries 37
 - Update Command 35
 - Moving Thumbnails between Catalogs 38

V

- View Buttons 11

Z

- Zoom Window Button 18

Imspace Systems Corporation

4747 Morena Blvd., Suite 360
San Diego, CA 92117 U.S.A.
800•488-KUDO (5836)
619•272-2600 International
619•272-4292 Fax

